

UNSPPOOL THE DIFF.



Nexans

MOBIWAY[®]
SPEED

Experience the Difference.
Ask for Mobipay[®] Speed.



EASY TO CARRY



- Ergonomic handles allow spool to be easily transported
- Safer to carry spool with less risk of injuries
- Prevents spool damage in the event of a fall or drop

EASY TO PULL



- Plug and play pulling system allows easy installation
- Avoid makeshift methods for spool installation
- Multiple cables can be pulled simultaneously

STABLE & STACKABLE



- Rubber feet provide ultimate stability and strong grip during pulls
- Stackability enables hassle-free storage
- Keeps your workspace and truck organized and tidy

MORE WIRE



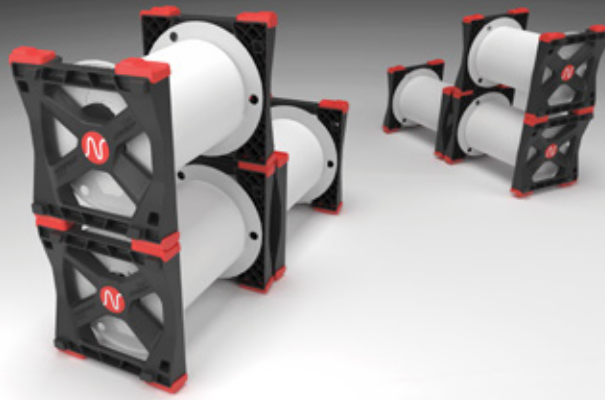
- Get more job out of a spool with 200m wire instead of 150m
- Reduce handling issues with less spools used per site
- Reduces wire scrap

Available in: Cable: NMD90 Canadex[®] | Size: 2C14 AWG | Colour: White | Spool size: 200m

Made in Canada.

nexans.ca

MOBIWAY
SPEED



Nexans

Description

MOBIWAY SPEED

CSA File #LL23462 Class 5821 02

NMD90 Canadex® cable with two copper conductors with 90°C PVC and nylon insulation.

Bare bonding wire and overall jacket of moisture resistant and flame retardant PVC, with FT1 rating.

INSTAGLIDE® LUBRICANT on the wire enables faster installation saving time and money.

Residential Applications for

MOBIWAY SPEED

- For open or concealed wiring in dry or damp locations where not exposed to mechanical injury.
- Maximum conductor temperature 90°C.
- Approved for use with ceiling fixtures.
- Minimum recommended handling temperature minus 25°C for two conductor cables and minus 10°C for three conductor cables (with suitable handling procedures).

Contact

Inside Sales Representatives

Phone: 905.944.4300 or 1.800.668.4585
buildingwire.canada@nexans.com

Characteristics

Construction

Conductor Material	Copper
Insulation	PVC/Nylon

Electrical

Maximum Operating Voltage	300 V
---------------------------	-------

Usage

Maximum Operating Temperature	90°C
-------------------------------	------

Jacket Colours

#14 AWG	White
---------	-------

Insulation Colours

Two Conductors	Black and White
----------------	-----------------



LEARN MORE

All drawings, designs, specifications, plans and particulars of weights, size and dimensions contained in the technical or commercial documentation of Nexans is indicative only shall not be binding on Nexans or be treated as constituting a representation on the part of Nexans.

October 2024

nexans.ca